

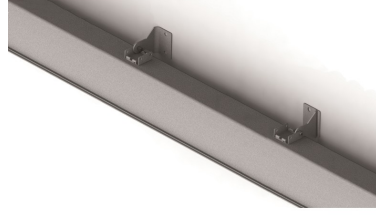
ACCIAIO ECO LED



Acciaio Eco LED



Acciaio Eco LED



Acciaio Eco LED with Adjustable Brackets



Acciaio Eco LED Emergency Module



Acciaio Eco LED Application

Acciaio Eco LED is the reply to the request for products with a high technological content for particularly demanding applications in high-risk areas.

The steel housing and glass diffuser present both excellent mechanical resistance (IK09) and resistance to aggressive chemical agents.

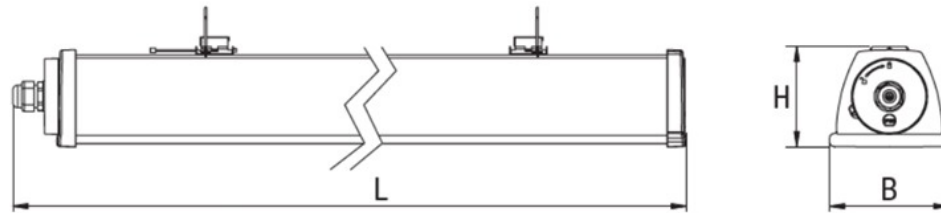
In the industrial field, it is ideally used in installations in environments with an explosive atmosphere, caused either by alterations of a gaseous type or by the presence of combustible powders suspended in the air (according to Standard ATEX 2014/34/EU for zones 02 and 22).

Product category: Surface, Suspended, Wall Mounted, Ceiling Mounted, Indoor, Outdoor, Industrial, Waterproof

FEATURES

Application	Offices, Production, Warehouses, Industrial Areas
Ballast	Constant Current LED (programmable)*, Constant Current LED**
Colour Rendering	>80
Colour Temp. (K)	4000K
Colours (RAL)	Grey RAL 7035
Energy Class	A++
IK Rating	IK09
IP Rating	IP66
Material	Polyester Powder Coated Sheet Steel
Mounting Options	Ceiling, Suspension, Busbar Trunking
Norms	[57,90,99,100,100]*, [57,89,98,100,100]**
Optics	Micro-Prismatic Tempered Glass
UGR	<22
Voltage (v)	230v

*Smart Driver **Eco Driver



Power* W	• Dimensions (mm) •			Weight max kg
	L	B	H	
1x36	1225	108	90	3.2
2x36	1225	108	90	3.2
1x58	1225	108	90	3.2
2x58	1225	108	90	3.2
2x80	1565	108	90	3.9

ACCESSORIES SUPPLIED

Order Code	Description
15040	Opticom Smart Photosensor Acciaio LED*

*Smart Driver

TO BE ORDERED SEPARATELY

Order Code	Description
20107	1200 Diffusing Screen
15019	Double Input Connection M20
15018	Kit Atex Acciaio Eco***
20122	Adjustable Bracket
418319000	Cable Gland M20 with Ventilation Valve
20102	Building Automation Central Unit*
20124	Building Automation Central Unit + Wifi*
20104	2 Input Interface - Radio Transmitter*
15022	Building Automation Radio Module*
15024	DALI Module*
15034	1-10V Module*
19359	Inverter Plug & Light LED M/NM 3h Duration 20-60V*
19355	Inverter LED AT/LG 6W 55V 1-3h Duration**
19390	Inverter LED Extreme AT/LG 10W 55V 0.75-8h LTO**
19391	Inverter LED Extreme AT/LG 10W 55V 0.75-8h LiFe**

*Smart Driver versions only **Smart Driver versions only, LG technology Inverters can be turned into LGFM using accessory code 19375 ***Supplied with 2x80 version

CONTROL SYSTEM ORDER CODES

TRADITIONAL ECO DRIVER

Power W.	Order Code	Description	LED Power W.	Power Consumption W.	No LEDs	Flux of LEDs	Flux of Fixture	Luminous efficiency lm/W
2x36	A236ED	ACCIAIO ED LED 2x36 4000K	34W	36W	96	5400lm	4400lm	124lm/W
2x58	A258ED	ACCIAIO ED LED 2x58 4000K	50W	52W	144	8050lm	6400lm	122lm/W

SMART DRIVER

Power W.	Order Code	Description	LED Power W.	Power Consumption W.	No LEDs	Flux of LEDs	Flux of Fixture	Luminous efficiency lm/W
2x18	A218ESD	ACCIAIO E LED 2x18 SD 4000K	11W	12W	32	1850lm	1600lm	135lm/W
1x36	A136ESD	ACCIAIO E LED 1x36 SD 4000K	15W	20W	48	3150lm	2700lm	135lm/W
2x36	A236ESD	ACCIAIO E LED 2x36 SD 4000K	30W	35W	96	5570lm	4700lm	135lm/W
1x58	A158ESD	ACCIAIO E LED 1x58 SD 4000K	23W	29W	72	4400lm	3800lm	131lm/W
2x58	A258ESD	ACCIAIO E LED 2x58 SD 4000K	46W	52W	144	8350lm	7000lm	135lm/W
2x80	A280ESD	ACCIAIO TOP LED 2x80 SD 4000K	68W	74W	180	11800lm	9900lm	135lm/W
1x36	A136E	ACCIAIO E LED 1x36 D 4000K	17W	22W	48	3150lm	2700lm	120lm/W
2x36	A236E	ACCIAIO E LED 2x36 D 4000K	35W	40W	96	5570lm	4700lm	120lm/W
1x58	A158E	ACCIAIO E LED 1x58 D 4000K	26W	32W	72	4400lm	3800lm	120lm/W
2x58	A258E	ACCIAIO E LED 2x58 D 4000K	52W	58W	144	8350lm	7000lm	120lm/W