

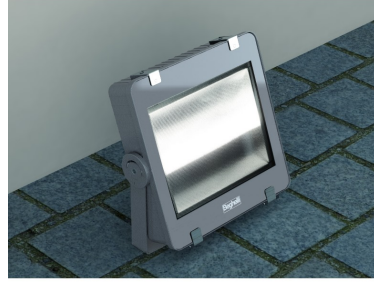
F30/50/70 LED



F30/50/70 LED



F30/50/70 LED



F30/50/70 LED Ground Mounting



F30/50/70 LED Wall Mounting



F30/50/70 LED Goniometric Bracket



F30/50/70 LED Application

The F30/50/70 LED is a fixture of the latest generation able to combine the advantages of the LED light source with state-of-the-art optic systems, as regards both performance and flexibility of application.

The LED sources used, with very high efficiency, produce unprecedented lighting that allows the illumination of building façades or hardstands, even at considerable distance. The diffuser has an ample and uniform area of emission, allowing very low luminosity and therefore reduced glare with high visual comfort.

The excellent mechanical characteristics (IP66-IK09) allow installation in outdoor environments even in extreme conditions. A LED inverter is also available which transforms the fixture into an emergency maintained fixture, to light a section of the LED source in the event of a black-out.

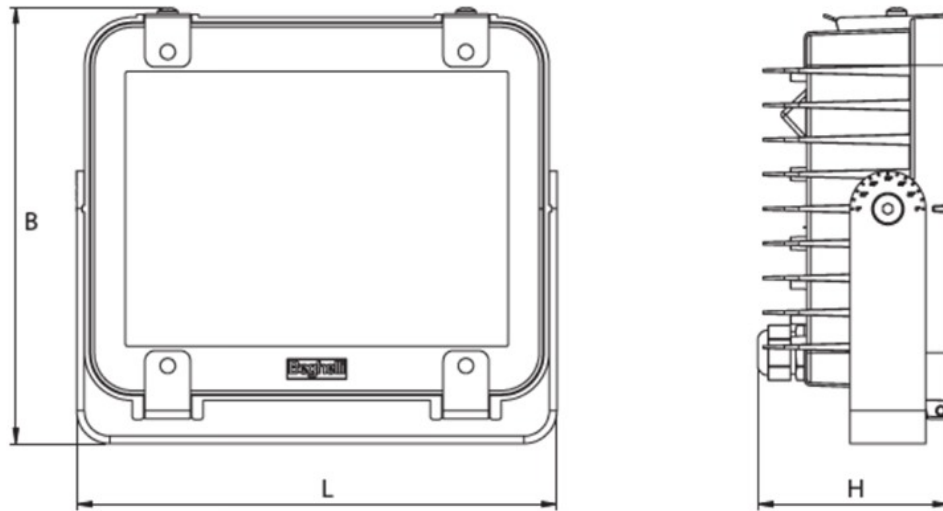
Louvre with a controlled beam to optimize the management of the light emitted. Symmetrical and asymmetrical optics in a single fixture: the beam of light changes from asymmetrical to symmetrical by simply removing part of the optic.

Product category: Luminaires, Surface, Floodlights, Wall Mounted, Ceiling Mounted, Indoor, Outdoor, Industrial

FEATURES

Application	Gardens, Building Entrances, Building Façades
Ballast	Constant Current LED
Colours (RAL)	Grey RAL 7040
IK Rating	IK09
IP Rating	IP66
Material	Die-Cast Aluminium
Mounting Options	Ground, Wall, Ceiling
Norms	[60,91,99,100,100]
Optics	Sheet Metal with Parabolic Development in Anti-Iridescent, Mirror Finished, Anodised Aluminium (Symmetrical/Asymmetrical)
Voltage (v)	240v, 24v DC*

*Sicuro24 System



Power * W	• Dimensions (mm) •			Weight max kg
	L	B	H	
30	190	173	75.5	1.2
50	190	173	75.5	1.2
70	190	173	75.5	1.2

ACCESSORIES SUPPLIED

Order Code	Description
-	Anti-Vandal Screws
-	Goniometric Bracket
418319000	M20 Cable Gland with Ventilation Valve

TO BE ORDERED SEPARATELY

Order Code	Description
20108	1 Output Interface - Radio Receiver

CONTROL SYSTEM ORDER CODES

TRADITIONAL ECO DRIVER

Power W.	Order Code	Description	LED Power W.	Colour Temp K.	Colour Rendering	Power Consumption W.	No LEDs	Flux of LEDs	Flux of Fixture	Luminous efficiency lm/W	Energy Class
30	F30LED	PRO LED 1x30W 4000K	15W	4000K	>80	17W	33	2100lm	1800lm	110lm/W	A++
50	F50LED	PRO LED 1x50W 4000K	23W	4000K	>80	26W	66	3500lm	3000lm	110lm/W	A++
70	F70LED	PRO LED 1x70W 4000K	33W	4000K	>80	37W	99	4600lm	4000lm	110lm/W	A++

