

GEO LED



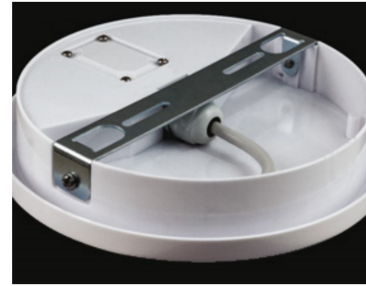
Geo LED White



Geo LED White



Geo LED Black



Geo LED Mounting Bracket



Geo LED PG9 Gland



Geo LED Wiring Compartment Open



Geo LED Wiring Compartment Closed

Ceiling lamp suitable for indoor and outdoor environments, for ceiling installation or wall areas where strong and diffused lighting is required.

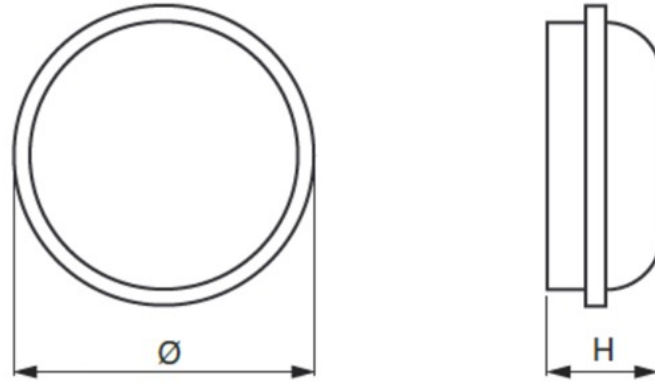
Particularly suitable for the lighting of stairs, areas of external access, corridors/interiors in shopping centres, shops, hotels and restaurants.

The unit is equipped with a reflector in a white plate and a high efficiency LED whose positioning on the reflector has been designed to obtain a wide beam with high luminous efficiency.

Product category: Surface, Wall Mounted, Ceiling Mounted, Indoor, Outdoor, Waterproof

FEATURES

Application	Secondary Areas
Ballast	Constant Current LED
Colour Rendering	>80
Colours (RAL)	White, Black
Energy Class	A++
IK Rating	IK07
IP Rating	IP65
Material	Polycarbonate Self-Extinguishing Thermoplastic
Mounting Options	Wall, Surface Ceiling
Norms	[41,70,89,95,100]
Optics	Symmetrical Diffusing
Voltage (v)	230v



Potenza W	• Dimensioni (mm) •		Peso kg
	Ø	H	
15	166	62	0,25
20	220	71	0,39

CONTROL SYSTEM ORDER CODES

TRADITIONAL ECO DRIVER

Power W.	Order Code	Description	Colour Temp K.	Power Consumption W.	No LEDs	Flux of LEDs	Flux of Fixture	Luminous efficiency lm/W
15	75320	Geo LED 15W Round White 3000K	3000K	15W	45	2025lm	1250lm	83lm/W
15	75321	Geo LED 15W Round White 4000K	4000K	15W	45	2025lm	1250lm	83lm/W
20	75322	Geo LED 20W Round White 3000K	3000K	20W	60	2700lm	1650lm	83lm/W
20	75323	Geo LED 20W Round White 4000K	4000K	20W	60	2700lm	1650lm	83lm/W
15	75324	Geo LED 15W Round Black 3000K	3000K	15W	45	2025lm	1250lm	83lm/W
15	75325	Geo LED 15W Round Black 4000K	4000K	15W	45	2025lm	1250lm	83lm/W
20	75326	Geo LED 20W Round Black 3000K	3000K	20W	60	2700lm	1650lm	83lm/W
20	75327	Geo LED 20W Round Black 4000K	4000K	20W	60	2700lm	1650lm	83lm/W