

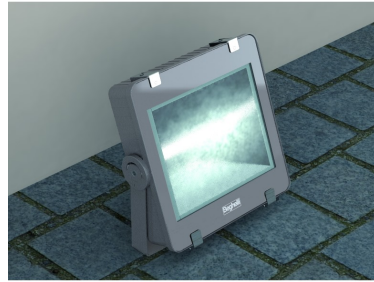
FH100/150/200 LED



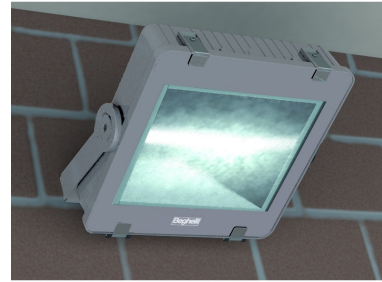
FH100/150/200 LED



FH100/150/200 LED



FH100/150/200 LED Ground Mounting



FH100/150/200 LED Wall Mounting



FH100/150/200 LED Suspended Mounting



FH100/150/200 LED Goniometric Bracket



FH100/150/200 LED Version with Asymmetric Optic



F100/150/200 LED Application

The FH100/150/200 LED are fixtures of the latest generation able to combine the advantages of the LED light source with state-of-the-art optic systems, as regards both performance and flexibility of application. The LED sources used, with very high efficiency, produce unprecedented lighting that allows the illumination of building façades or hardstands, even at considerable distance.

The diffuser has an ample and uniform area of emission, allowing very low luminosity and therefore reduced glare with high visual comfort. The excellent mechanical characteristics (IP66-IK09) allow installation in outdoor settings even in extreme conditions, while the possibility of versions with a symmetrical or asymmetrical beam makes the fixture particularly versatile. The "square cut" design of the FH100/150/200 LED allows movement through 360°, on the axis of rotation of the goniometric bracket, thus enabling great flexibility of movement and mounting.

The FH150 and FH200 LED versions, being equipped with 2 independent drivers, can have a double power supply and a double switch on: a 100% light and a limited power and flow light. Low power switch on is useful both for night lighting always on and for emergency lighting. A LED Inverter is also available which transforms the fixture into an emergency maintained fixture, to light a section of the LED source in the event of a black-out.

Floodlight with a controlled beam to optimise the management of the light emitted. Symmetrical and asymmetrical optics in a single fixture: the beam of light changes from asymmetrical to symmetrical by simply removing part of the optic.

Product category: Surface, Suspended, Floodlights, Wall Mounted, Ceiling Mounted, Indoor, Outdoor, Industrial

FEATURES

Application	Sport, Gardens, Building Entrances, Building Façades
Ballast	Constant Current LED
Colour Rendering	>80
Colour Temp. (K)	4000K
Colours (RAL)	Grey RAL 7040
Energy Class	A++
IK Rating	IK09
IP Rating	IP66
Material	Polyester Powder Coated Die-Cast Aluminium
Mounting Options	Ground, Wall, Spotlight Towers, Suspension, Ceiling
Norms	[59,89,99,100,100]
Optics	Sheet Metal with Parabolic Development in Anti-Iridescent, Mirror Finished, Anodised Aluminium (Symmetrical/Asymmetrical)
Voltage (v)	230v

ACCESSORIES SUPPLIED

Order Code	Description
-	Anti-Vandal Screws
-	Goniometric Bracket
418319000	M20 Cable Gland with Ventilation Valve

TO BE ORDERED SEPARATELY

Order Code	Description
12659	Electrified Rail Fixing Bracket
12664	Ceiling Fixing Bracket
12661	Post Head 2x 60-76
12662	Post Head 4x 60-76
12663	Floodlight Suspension Cable
12657	Protective Grid

CONTROL SYSTEM ORDER CODES

TRADITIONAL ECO DRIVER

Power W.	Order Code	Description	LED Power W.	Power Consumption W.	No LEDs	Flux of LEDs	Flux of Fixture	Luminous efficiency lm/W
100	FH100ED	PRO LED 100 4000K ED	45W	50W	144	7400lm	6450lm	128lm/W
150	FH150ED	PRO LED 150 4000K ED	68W	76W	216	11200lm	9700lm	128lm/W
200	FH200ED	PRO LED 200 4000K ED	91W	101W	288	15000lm	12900lm	128lm/W

This product is currently unavailable.